

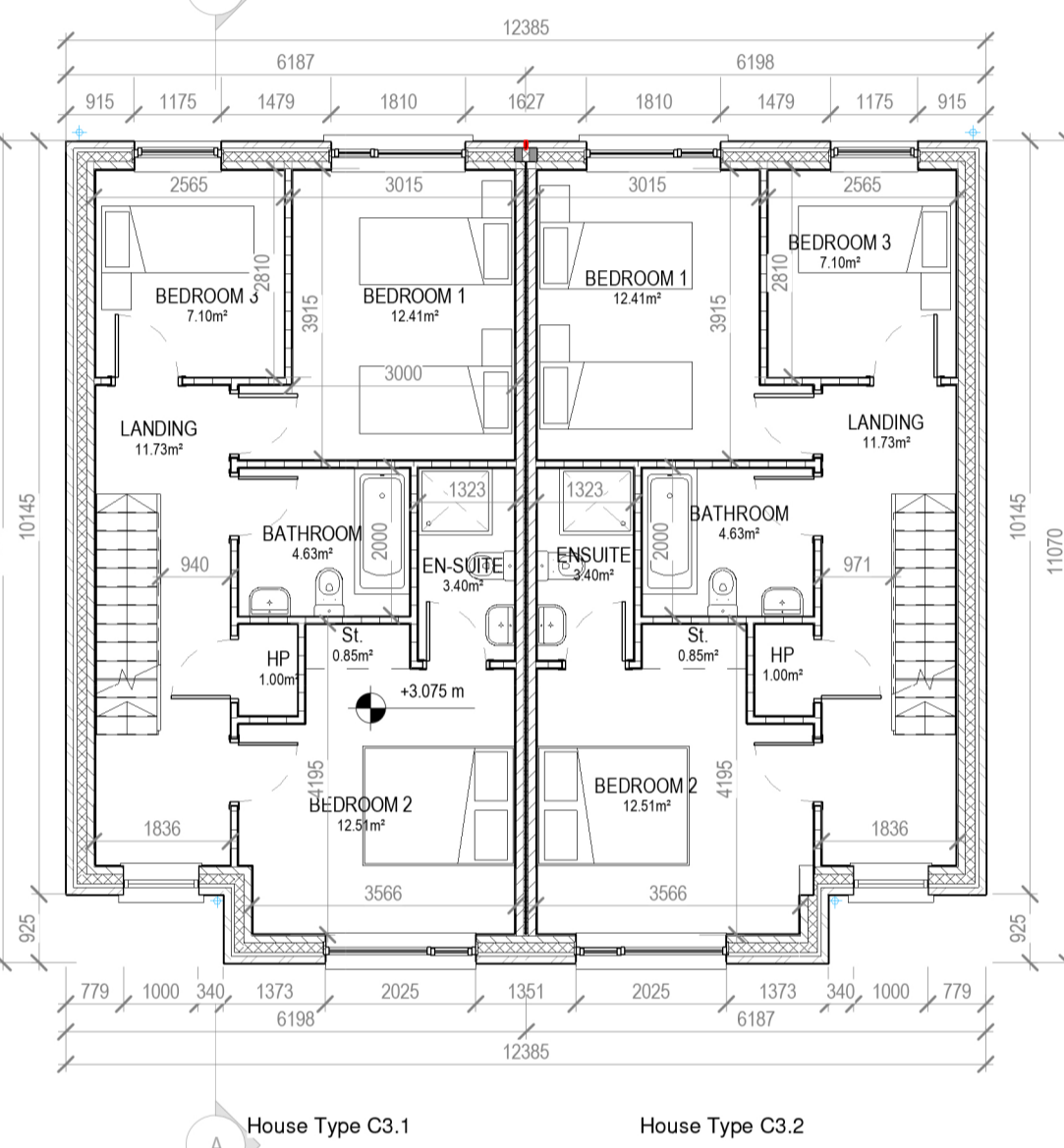
3 Block 8 - Second Floor Plan  
1:100



4 Block 8 - Front Elevation  
1:100



5 Block 8 - Rear Elevation  
1:100



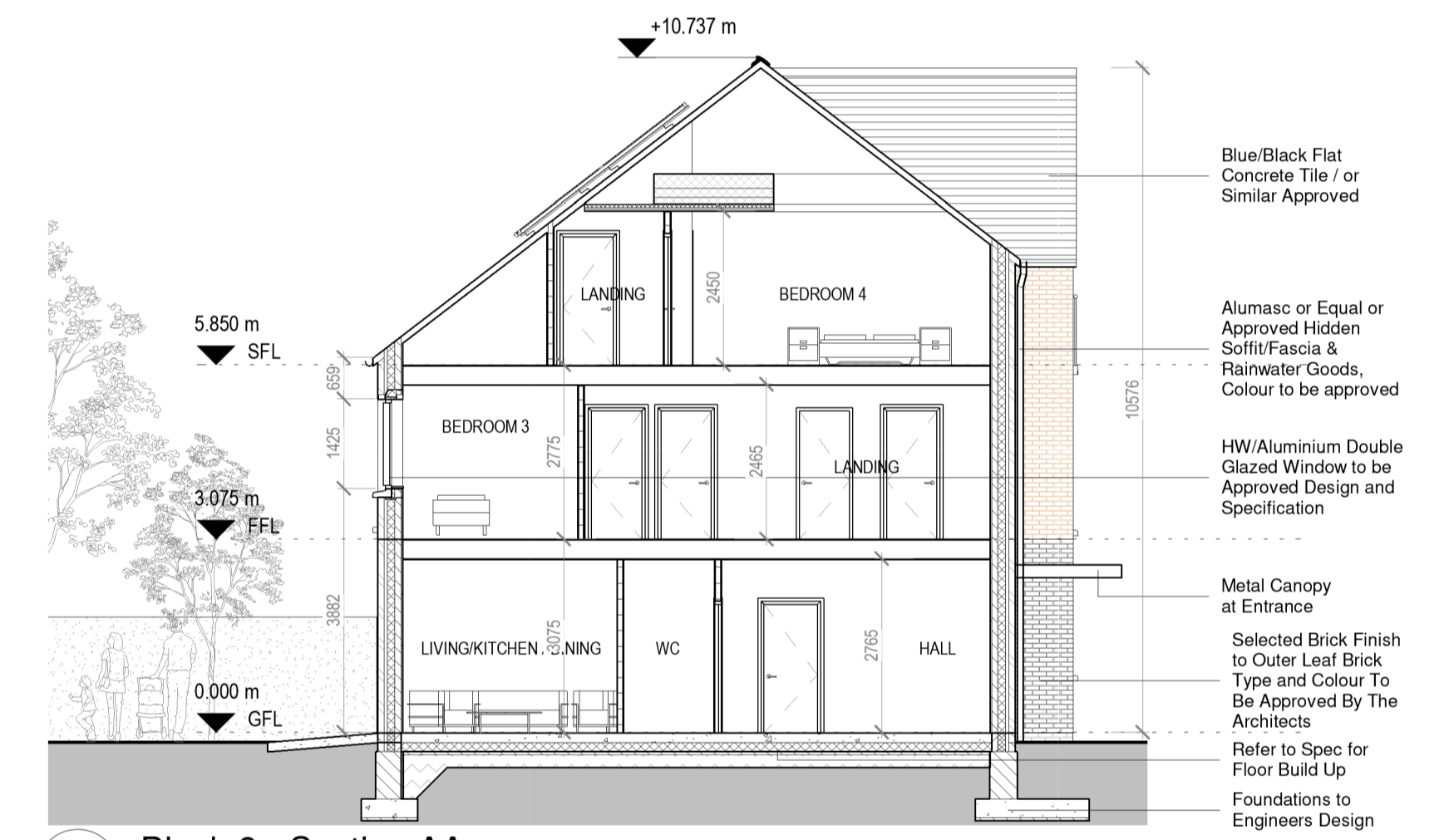
2 Block 8 - First Floor Plan  
1:100



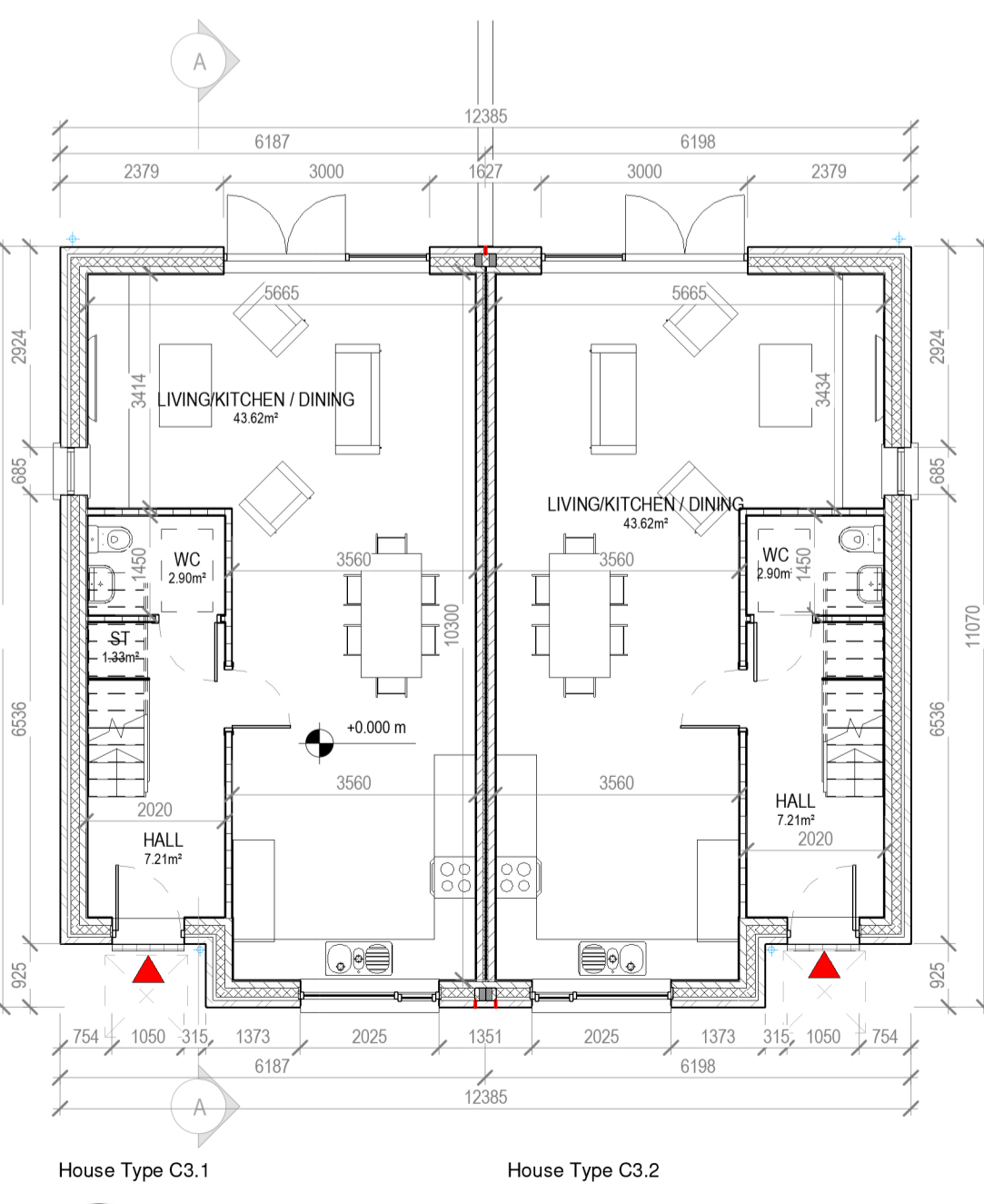
6 Block 8 - Side Elevation 2  
1:100



7 Block 8 - Side Elevation 1  
1:100



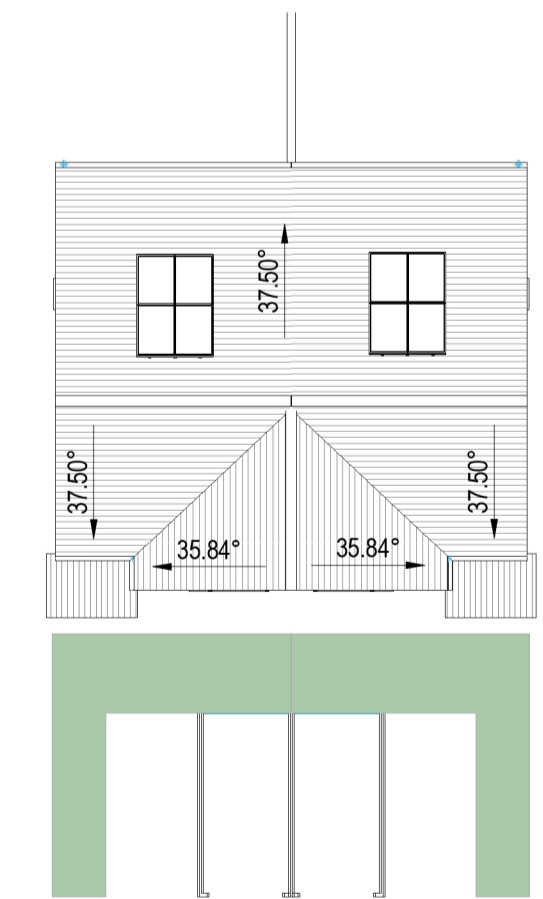
8 Block 8 - Section AA  
1:100



1 Block 8 - Ground Floor Plan  
1:100



10 Block 8 - 3D View

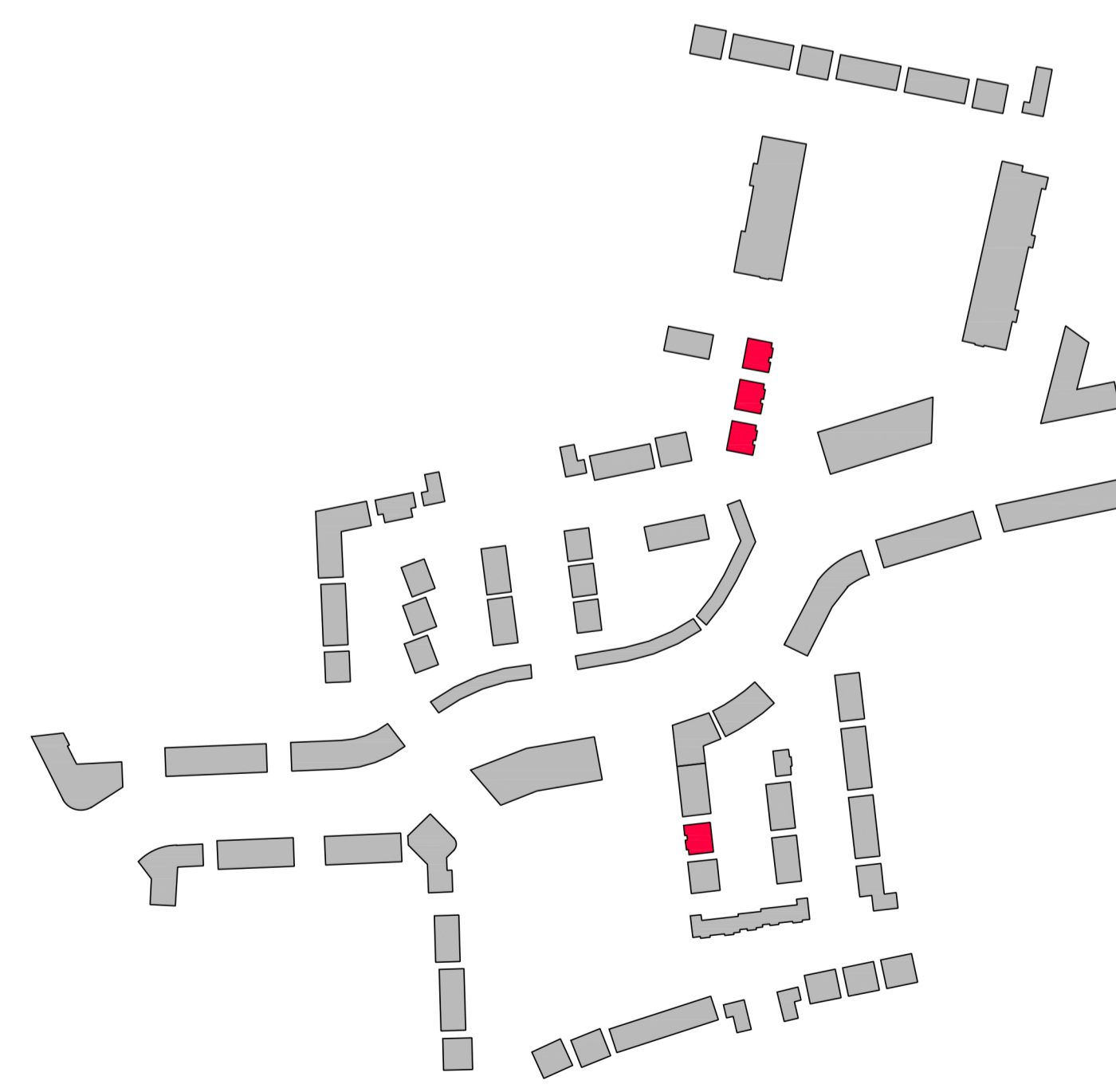


9 Block 8 - Roof Plan  
1:200

HOUSE TYPE C3.1 & C3.2  
4 BEDROOM / 7 PERSON  
FLOOR AREA 154 M2

	Dwelling Type	Gross Floor Area	Minimum Main Living room	Aggregate living area	Aggregate bedroom area of	Storage
Target	4 Bed 7P house	120	15	40	43	6
Proposed	4 Bed 7P house	154	17.3	41.5	56.2	6

PLEASE NOTE:  
Minimum unobstructed living room width 3.8m.  
Main bedroom area 13m2, Double room 11.4m2 (2.8m minimum width), Single 7.1m2 (2.1m minimum width)



NOTE:  
Levels shown on architectural block plans relate to local Ground Floor Level and do not relate to Ordnance Datum.  
For Finished Ground Floor Levels related to Ordnance Datum see DBF1 Engineers drawings numbered: 180002-2000 Roads Layout / 180002-2001 Roads Layout Sheet 1 / 180002-2002 Roads Layout Sheet 2

CPR Note:  
All works to be carried out using proper materials which are fit for the use they are intended and for the condition in which they are to be used.  
All materials used in connection with the works to comply with the Construction Products Regulation (EU) No. 305/2011 and the harmonised technical specification/standards that fall within the remit of the CPR No. 305/2011

**van Dijk Architects**  
MILL HOUSE, MILL STREET, DUNDALK, CO. LOUTH  
PH: 042-9354466 FAX: 042-9354460  
INFO@VANDIJKARCHITECTS.COM

DRAWING TITLE  
BLOCK 8 - UNITS C3.1 / C3.2 PLANS, ELEVATIONS & SECTION

SCALE AS INDICATED 1:75 PA-BL8-100 JOB 1 CLONMINTH TULLAMORE  
AS INDICATED 1:75 PA-BL8-100 CLIENT STEINFORT INVESTMENT  
REVISED DRAWING BY: AH DATE OCTOBER 2021

FIGURED DIMENSIONS MUST BE USED IN PREFERENCE TO UNFIGURED DIMENSIONS. ANY DIMENSIONAL DISCREPANCIES MUST BE REPORTED TO THE ARCHITECT IMMEDIATELY. THIS DRAWING REMAINS THE COPYRIGHT OF VAN DIJK ARCHITECTS. IT MUST NOT BE USED FOR ANY PURPOSE BEYOND THAT STATED WITHOUT THE EXPRESS PERMISSION OF THE ARCHITECT. DO NOT COPY OR REDISTRIBUTE THESE DRAWINGS OR ANY ADDITIONAL INFORMATION WITHOUT THE EXPRESS APPROVAL OF vanDijk Architects